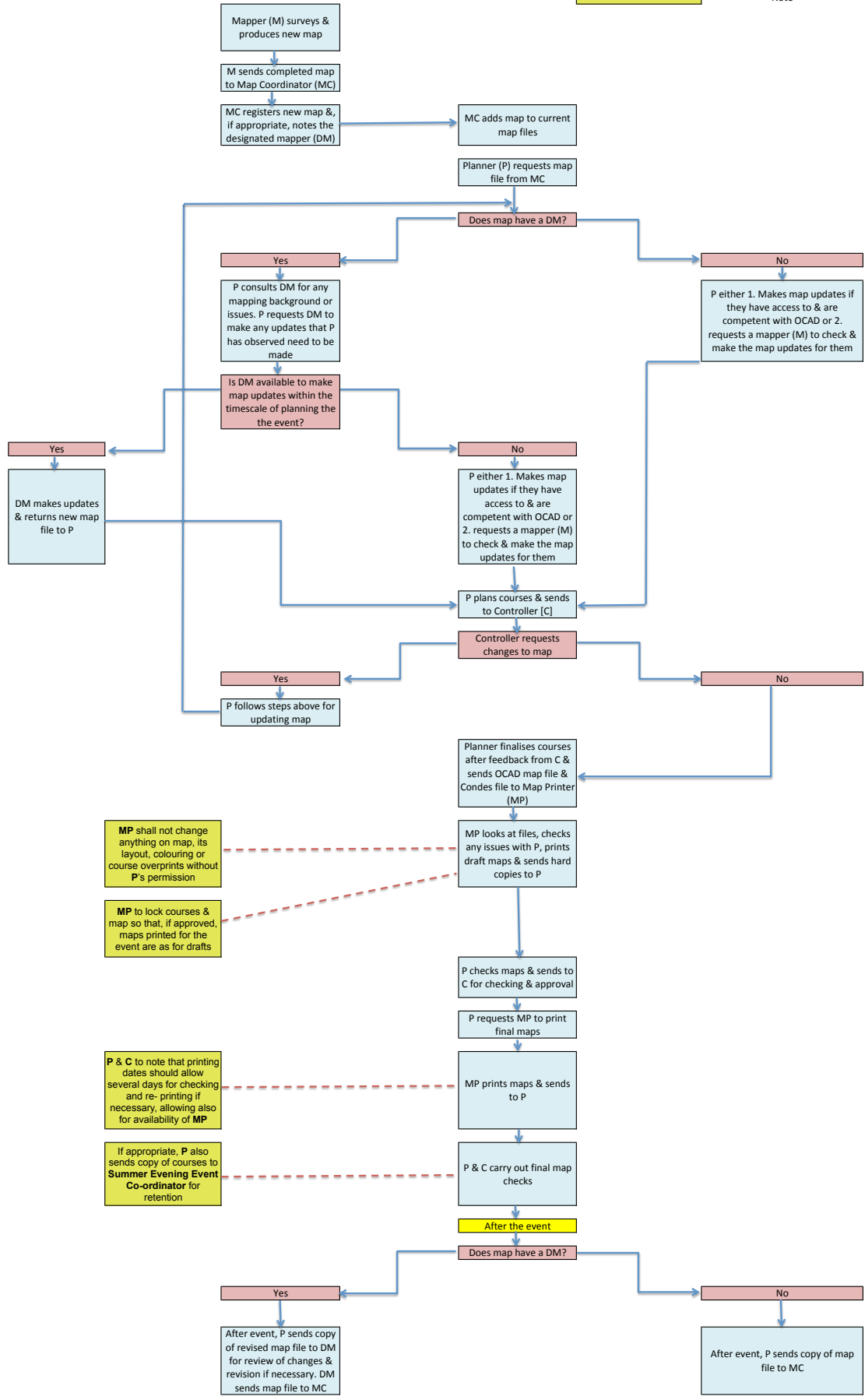


Flow Chart for Event Planning & Map Printing
Version 5: 10-06-2016



MP shall not change anything on map, its layout, colouring or course overprints without P's permission

MP to lock courses & map so that, if approved, maps printed for the event are as for drafts

P & C to note that printing dates should allow several days for checking and re- printing if necessary, allowing also for availability of MP

If appropriate, P also sends copy of courses to Summer Evening Event Co-ordinator for retention